

**CORPORATE ASSETS INC**

**LIKE NEW WITH LOW MILEAGE!**

# PUBLIC AUCTION

## IMMACULATE TRUCK EVENT



### 10 INTERNATIONAL TRUCKS 2014-2016!

DATE

TIME

LOCATION

Tuesday, December 20, 2016

2:00 P.M. EST

1565 Buchanan Trail East,  
Shady Grove, PA, USA, 17256-002

*This auction is*  
**ONSITE & ONLINE**

**CORPORATE ASSETS INC**

“Let Our Experience Be Your #1 Asset”™

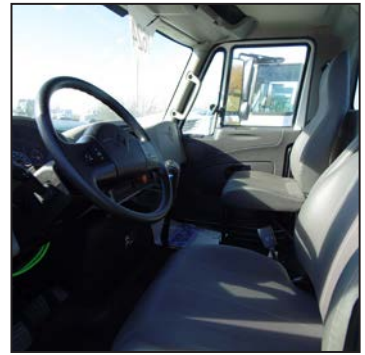
www.corpassets.com • 416.962.9600 • info@corpassets.com

LIVE WEBCAST powered by

**BidSpotter.com**

# THESE TRUCKS ARE LIKE NEW WITH MINIMAL MILEAGE!

2016



**INTERNATIONAL** (2016) 7400 SBA 6X4 Tandem axle truck with NAVISTAR N10 350hp diesel engine, EATON/FULLER 8 speed manual transmission, power windows & locks, cruise control, a/c, air ride driver seat, 526 miles. VIN# 1HTWGSUT6GH723078, TRUCK #1624

2015



**INTERNATIONAL** (2015) 7600 SBA 6X4 2010 Tandem axle truck with NAVISTAR N13 430hp diesel engine, EATON/FULLER 8 speed manual transmission, power windows & locks, cruise control, a/c, air ride driver seat, 505 miles. VIN # 1HTGSSNTXFH181418, TRUCK #1382

**CONTACT 416.962.9600 TO CONSIGN EQUIPMENT AT AN UPCOMING AUCTION**

**IF INTERESTED IN A PRE-INSPECTION, PLEASE CALL 416.962.9600 TO ARRANGE.**

**2014**



**INTERNATIONAL (2014) 7600 SBA 6X4 2010 Tandem axle truck with NAVISTAR N13 430hp diesel engine, EATON/FULLER 8 speed manual transmission, power windows & locks, cruise control, a/c, air ride driver seat, 574 miles. VIN # 1HTGSSNT8FH181417, TRUCK #1344**

**2015**



**INTERNATIONAL (2015) 7600 SBA 6X4 2010 Tandem axle truck with NAVISTAR N13 430hp diesel engine, EATON/FULLER 8 speed manual transmission, power windows & locks, cruise control, a/c, air ride driver seat, 172 miles. VIN # 1HTGSSNT6FH181416, TRUCK #1343**

**TO SCHEDULE AN AUCTION CONTACT 416.962.9600**

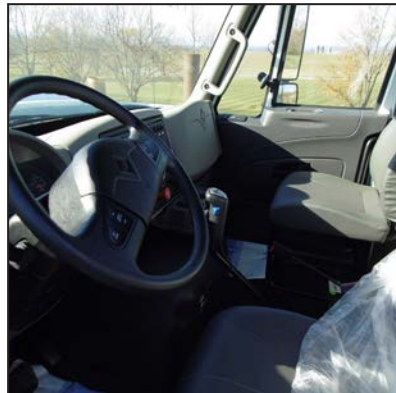
## THESE TRUCKS FEATURE A HEAVY DUTY 430 HP MOTOR

2014



**INTERNATIONAL** (2014) 7600 SBA 6X4 2010 Tandem axle truck with NAVISTAR N13 430hp diesel engine, EATON/FULLER 8 speed manual transmission, power windows & locks, cruise control, a/c, air ride driver seat, 504 miles. VIN # 1HTGSSNT2EH785829, TRUCK #1171

2014



**INTERNATIONAL** (2014) 7600 SBA 6X4 2010 Tandem axle truck with NAVISTAR N13 430hp diesel engine, EATON/FULLER 8 speed manual transmission, power windows & locks, cruise control, a/c, air ride driver seat, 526 miles. VIN #(To be confirmed) TRUCK #1186

**CONTACT 416.962.9600 TO CONSIGN EQUIPMENT AT AN UPCOMING AUCTION**

## (4) 2015 INTERNATIONAL 4300 SBAs AVAILABLE!

2015



**INTERNATIONAL** (2015) 4300 SBA 4X2 Single axle truck with CUMMINS ISB 240 240hp diesel engine, EATON SYNCRO 6 manual transmission, cruise control, a/c, air ride driver seat, 273 miles, VIN # 3HAMMMN7FL720101 TRUCK # 1474

2015



**INTERNATIONAL** (2015) 4300 SBA 4X2 Single axle truck with CUMMINS ISB 240 240hp diesel engine, EATON SYNCRO 6 manual transmission, cruise control, a/c, air ride driver seat, 361 miles, VIN # 3HAMMMN5FL720100 TRUCK # 1478

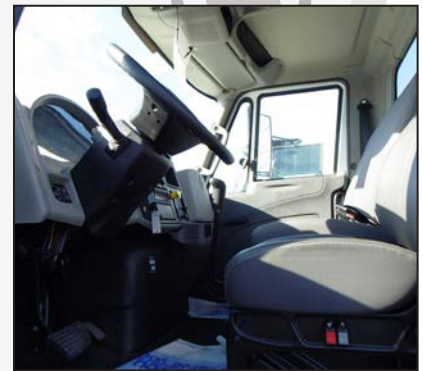
**TO SCHEDULE AN AUCTION CONTACT 416.962.9600**

2015



**INTERNATIONAL** (2015) 4300 SBA 4X2 Single axle truck with CUMMINS ISB 240 240hp diesel engine, EATON SYNCRO 6 manual transmission, cruise control, a/c, air ride driver seat, 260 miles, VIN # 3HAMMMMN2FL720099 TRUCK # 1475

2015



**INTERNATIONAL** (2015) 4300 SBA 4X2 Single axle truck with CUMMINS ISB 240 240hp diesel engine, EATON SYNCRO 6 manual transmission, cruise control, a/c, air ride driver seat, 275 miles, VIN # 3HAMMMMN0FL720098 TRUCK # 1473

MEMBER IN GOOD STANDING



# AUCTION DETAILS

## IMMACULATE TRUCK EVENT

### INSPECTION

Tuesday, December 20 from 9:00 A.M. to start of auction.

### REMOVAL

ALL REMOVALS BY APPOINTMENT ONLY. Please call Louise Timperley at 416.962.9600 to arrange.

### PAYMENT

Please visit our website for details at

**[www.corpassets.com](http://www.corpassets.com)**

A Buyer's Premium will apply at this sale.



**We  
Accept**

Please visit our website as specific terms and conditions may apply.

### TERMS

Corporate Assets Inc. assumes no liability for errors or omissions in this brochure. Corporate Assets Inc. expressly reserves the right to determine the manner of conducting the auction as it may deem appropriate. All subject to prior sale.

## APPRAISAL SERVICES

What's the real value of your equipment? If you require a detailed appraisal for banking, insurance, or internal purposes, consult with the certified experts at Corporate Assets Valuations. We provide appraisal services anywhere in the world for all types of industrial manufacturing and processing equipment.

- We will appraise one machine or your complete plant
- Going Concern, Fair Market or Liquidation Values

Call us in complete confidence today with your requirements.

**Phone: (416) 962-9600**

**Fax: (416) 962-9601**

**Email: [appraisals@corpassets.com](mailto:appraisals@corpassets.com)**

## **AUCTION CONDUCTED BY CORPORATE ASSETS INC.**

For further information contact us at:

74 Berkeley Street

Toronto, Ontario, Canada M5A 2W7

Tel: (416) 962-9600 • Fax: (416) 962-9601

Email: [info@corpassets.com](mailto:info@corpassets.com)

**Web: [www.corpassets.com](http://www.corpassets.com)**

**Toronto • Montreal • Chicago**