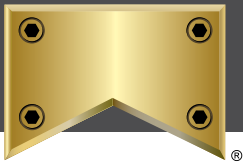


# ONLINE AUCTION



**CORPORATE  
ASSETS INC**



**WESTROCK**



**Tuesday, December 13  
Wednesday, December 14  
9:30 AM EST**

**2-DAYS!  
2000+ LOTS!**

1 S Everitt Ave,  
Panama City, Florida, USA, 32401

**INSPECTION: BY APPOINTMENT ONLY.** Please email  
info@corpassets.com to arrange a date & time.

**LIVE WEBCAST ONLY** BidSpotter

**MULTI-MILLION DOLLAR MRO INVENTORY AUCTION!**



AUCTION CONDUCTED BY:

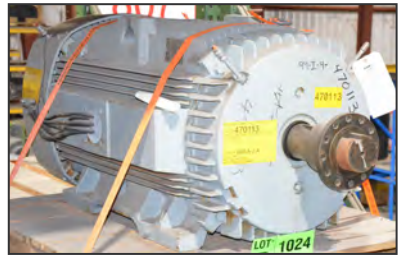
**CORPORATE ASSETS INC**

**"Let Our Experience Be Your #1 Asset"™**

373 Munster Avenue, Toronto, ON, Canada M8Z 3C8

www.corpassets.com • 416.962.9600 • info@corpassets.com

**MARK YOUR CALENDARS FOR THIS INCREDIBLE OPPORTUNITY!**



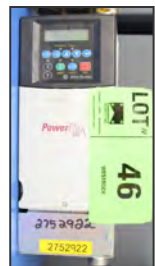
**CONTACT 416.962.9600 TO CONSIGN EQUIPMENT AT AN UPCOMING AUCTION**

**MOST MRO ASSETS ARE BRAND NEW & RECENTLY PURCHASED**

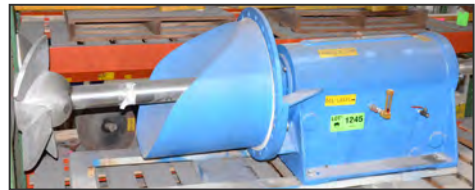


**TO SCHEDULE AN AUCTION CONTACT 416.962.9600**

# HUGE OFFERING OF ELECTRICAL EQUIPMENT & ACCESSORIES

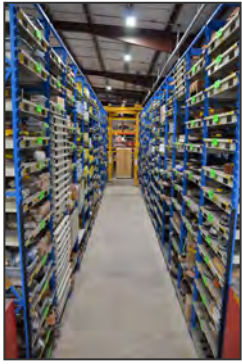


CONTACT 416.962.9600 TO CONSIGN EQUIPMENT AT AN UPCOMING AUCTION



**TO SCHEDULE AN AUCTION CONTACT 416.962.9600**

**50,000 SQ. FT SPARES WAREHOUSE PACKED WITH 2000+ LOTS!**



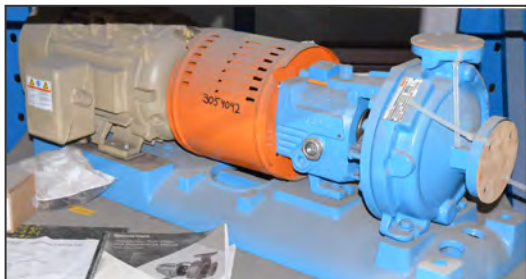
**CONTACT 416.962.9600 TO CONSIGN EQUIPMENT AT AN UPCOMING AUCTION**

**BRAND NEW GEAR BOXES, PLANETARY GEAR REDUCERS & MUCH MORE!**



**TO SCHEDULE AN AUCTION CONTACT 416.962.9600**

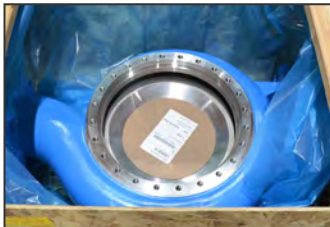
**TREMENDOUS OFFERING OF NEW GOULDS PUMP & ACCESSORIES**



**CONTACT 416.962.9600 TO CONSIGN EQUIPMENT AT AN UPCOMING AUCTION**



**IF INTERESTED IN PURCHASING PRIOR CALL RYAN @ 416-962-9600.**



**TO SCHEDULE AN AUCTION CONTACT 416.962.9600**



**FEATURING:** HUGE (300+) QTY of GE QUANTUM, WESTINGHOUSE, GE, TOSHIBA, CANADIAN GE, SIEMENS and BALDOR ABB AC ELECTRIC MOTORS majority in BRAND NEW and rebuilt condition ranging from 1/2 HP to 2500 HP; TOSHIBA & GE specialty roller bearing AC electric motors suitable for side-load application; electric motor steel mounting pads; MASSIVE OFFERING of FAG, SKF, TIMKEN, NSK roller, spherical, needle, linear, thrust, pillow block and BABBITT bearings inventory; LARGE SELECTION OF GOULDS, GORMAN RUPP & WORTHINGTON centrifugal, fan and axial pump Stainless Steel & Titanium casings, rotary assemblies, stainless steel impellers & suction plates; ALLEN BRADLEY, SIEMENS & ABB VFDs ranging from 1/2 HP to 650 HP; SELECT FISHER, MASONELIAN, DSS and DEZURIK INVENTORY of Stainless Steel, Titanium and conventional power actuated & manual valves BRAND NEW AND RECONDITIONED ranging from 2" to 24" diameter; YOKOGAWA, FISHER, EMERSON ROSEMOUNT sensors, instruments, transmitters and DROs; LARGE QUANTITY OF FALK, NORDGEAR, PLANET GEAR single, double shaft and planetary gear reducers; DRIVELINE & POWER TRANSMISSION COMPONENTS including sheaves, sprockets, BRONZE gears, BRONZE half split sleeves, pinions, universal joint shafts, roller chain and shafts; select inventory of PAD TYPE & DRY TYPE TRANSFORMERS including a BRAND NEW! VANTRAN (2020) TYPE CZ pad type transformer with 10,000KVA, 110KV/75KV13,800-7970-2400V, SUNBELT MFG PBH0960 pad type transformer with 1500KVA/13,800-480-277V, (3) NWL (as new as 2019) REF32636 transformer-rectifiers, spare transformer coil-cores; (20+) high & medium voltage wire spools; LARGE SELECTION of BRAND NEW VALMET & GL&V 222" WIDE felt, press fabric & dryer fabric; SPARE PARTS INVENTORY including but not limited to Stainless Steel & conventional plumbing fittings, flanges and elbows, fastening hardware, electrical, ALLEN BRADLEY, ABB and GE electronic parts, boards, supplies & components; ENERPAC electro-hydraulic portable power packs with hydraulic jacks up to 150 ton cap; lube systems & heat exchangers; ferrous & non-ferrous surplus machinery, parts & inventory yard; hand tools, power tools & **MORE!**

**THIS IS A PARTIAL LISTING ONLY! FOR FURTHER INFORMATION, PLEASE VISIT [WWW.CORPASSETS.COM](http://WWW.CORPASSETS.COM)**

## AUCTION DETAILS

LIVE WEBCAST ONLY

### INSPECTION

BY APPOINTMENT ONLY. Please email [info@corpassets.com](mailto:info@corpassets.com) to arrange a date and time.

### REMOVAL

All assets must be removed no later than Friday, December 30 BY APPOINTMENT ONLY. Please email [info@corpassets.com](mailto:info@corpassets.com) to arrange.

### TERMS

Corporate Assets Inc. assumes no liability for errors or omissions in this brochure. Corporate Assets Inc. expressly reserves the right to determine the manner of conducting the auction as it may deem appropriate. All subject to prior sale.

### PAYMENT

A Buyer's Premium will apply at this sale. International & online bidders may need a refundable deposit to bid. **SALE WILL BE CONDUCTED IN USD.**

Please refer to our website at [www.corpassets.com](http://www.corpassets.com) or call 416.962.9600 for further information. Pour les services en français, composez le 1.855.583.5551

We Accept



Please visit our website as specific terms and conditions may apply.

BID ONLINE AT: **BidSpotter**

### AFFILIATIONS



## WE BUY & SELL YOUR SURPLUS MACHINERY

ONE MACHINE OR ENTIRE PLANTS, WE HAVE OVER 60 YEARS EXPERIENCE TO SELL YOUR EQUIPMENT AT FAIR MARKET VALUE.

CONTACT US TODAY TO LEARN MORE! 416.962.9600

