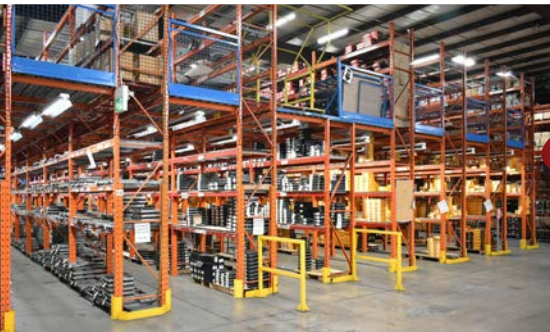


**CORPORATE
ASSETS INC**

ONLINE AUCTION

ABS FRICTION INC.



**Wednesday, March 19 &
Thursday, March 20
10:00 AM EDT**
55 Taggart Street,
Guelph, Ontario, N1L 1M6

**MARK YOUR
CALENDARS!**

INSPECTION: Tuesday, March 18 from 9 AM to 4 PM EDT.

LIVE WEBCAST ONLY BidSpotter

100,000+ SQ.FT BRAKE PAD MFG. FACILITY & INVENTORY EVENT!



AUCTION CONDUCTED BY:

CORPORATE ASSETS INC

“Let Our Experience Be Your #1 Asset”™

373 Munster Avenue, Toronto, ON, Canada M8Z 3C8

www.corpassets.com • 416.962.9600 • info@corpassets.com

COMPLETE PAD PRE-FORM, CURING AND FINISHING DEPARTMENTS

75 TON CAPACITY



(5) 3 AVAILABLE — 2 SOLD!

Partial view of hydraulic pre-form presses



7 AVAILABLE

Partial view of hydraulic pre-form presses



25" X 30" HEATED PLATENS

(9) 7 AVAILABLE — 2 SOLD!

View of multi platen curing presses



(7) 3 AVAILABLE — 4 SOLD!

Partial view of automatic brake pad grinders

CONTACT 416.962.9600 TO CONSIGN EQUIPMENT AT AN UPCOMING AUCTION



500 LITER CAPACITY

3 AVAILABLE

Partial view of **ALTECH ENGINEERING** M30 automatic horizontal compound mixers available



2000 LITER CAPACITY

LITTLEFORD FKM-2000-E automatic horizontal compound mixer



RETROFIT SIEMENS CONTROL

LITTLEFORD FKM-2000-D automatic horizontal compound mixer

COMPOUND MIXERS

LITTLEFORD FKM-2000-E automatic horizontal compound mixer with retrofit touch screen PLC control, 2,000 liter capacity, 40 hp main drive motor, (2) side scraper heads, (2) top fill ports, (1) bottom discharge port, (2) 21" x 17" side hatches, 575v/3ph/60hz, s/n 42650-2355 (MIXER #1) **SOLD!**

LITTLEFORD FKM-2000-D automatic horizontal compound mixer with retrofit touch screen PLC control, 2,000 liter capacity, 75 hp main drive motor, (4) side scraper heads, (2) top fill ports, (1) bottom discharge port, (2) 22" x 13" side hatches, 575v/3ph/60hz, s/n 40956-3569 (MIXER #2) **SOLD!**

ALTECH ENGINEERING M30 automatic horizontal compound mixer with ALLEN BRADLEY resistive touch screen PLC control, 500 liter cap., 30 hp main drive motor, (1) side scraper head, (1) top fill port, (1) bottom discharge port, (1) 28" x 16" side hatch, 600v/3ph/60hz, s/n 1203 (MIXER #3)

ALTECH ENGINEERING M30 automatic horizontal compound mixer with 500 liter capacity, 30 hp main drive motor, (1) side scraper head, (1) top fill port, (1) bottom discharge port, (1) 28" x 16" side hatch, 600v/3ph/60hz, s/n 0996 (MIXER #4)

ALTECH ENGINEERING M30 automatic horizontal compound mixer with 500 liter capacity, 30 hp main drive motor, (1) side scraper head, (1) top fill port, (1) bottom discharge port, (1) 28" x 16" side hatch, 600v/3ph/60hz, s/n 0399 (MIXER #5)

QUADRO COMIL 196SI overhead driven conical mill re-grinder with stand, s/n 196-C799

LATE MODEL SHOT BLAST & POWDERCOAT FINISHING DEPARTMENT



WHEELABRATOR TB#12 tumble blast machine w/ SIEMENS SIMATIC touch screen PLC controls



SIEMENS PLC CONTROL

MPT automatic tumble blast machine with SIEMENS SIMATIC touch screen PLC controls



PROTEC CIC TUMBLE BLAST automatic tumble blast machine



(12) GUN CONFIGURATION

POWDERCOAT SYSTEMS-RADCON THERMAL automatic powder coat paint line

PARTIAL LISTING OF TUMBLE BLAST MACHINES

WHEELABRATOR TB#12 tumble blast machine with conventional controls, approx. 12 cu/ft cap, 38" w rubber belt, (1) 15 hp blast wheel, 800 lbs capacity skip hoist, manual door, cyclonic media recovery, 440v/3ph/60hz, s/n 206 (CI)

PROTEC CIC TUMBLE BLAST automatic tumble blast machine with conventional controls, approx. 12 cu/ft cap, 35" rubber belt, (1) 10 hp blast wheel, ECONOLIFT hydraulic up-ender with 4,400 lbs capacity, electro- hydraulic power pack, pneumatic door, pneumatic loading and unloading, cyclonic media recovery, 600v/3ph/60hz, s/n 044635

CONTACT 416.962.9600 TO CONSIGN EQUIPMENT AT AN UPCOMING AUCTION



COMPLEMENT OF VEHICLE TEST FIXTURES AVAILABLE

LINK ENGINEERING 2554EA test bench dynamometer with LINK dynamometer control system



KEYENCE IM7030 digital image dimension measuring system



Partial view of lab equipment available

1,200,000 BTU/PHR



HONEYWELL DIGITAL MICROPROCESSOR CONTROL

Resin curing ovens

RESIN CURING OVENS

INDUSTRIAL FINISHING SYSTEMS RESIN CURING OVEN natural gas fired double door curing oven with HONEYWELL digital microprocessor temp controller, approx. 113"W x 96"H x 118"D chamber dimensions, 1,200,000 BTU/HR capacity, 600v/3ph/60hz, s/n 930924C1B0 (ROOF TOP BLOWERS AND PIPE NOT INCLUDED)

CUSTOM THERMAL APPLICATION RESIN CURING OVEN natural gas fired double door curing oven with HONEYWELL digital microprocessor temp controller, approx. 113"W x 96"H x 118"D chamber dimensions, 1,200,000 BTU/HR capacity, 600v/3ph/60hz, s/n 970127C1.B0 (ROOF TOP BLOWERS AND PIPE NOT INCLUDED)

TO SCHEDULE AN AUCTION CONTACT 416.962.9600

LATE MODEL HIGH VOLUME FLEXIBLE STORAGE SYSTEMS AVAILABLE

170 SECTIONS AVAILABLE



REDI-RACK/KONSTANT 18-bay flexible storage structure



(42) sections of 9' L x 42" W x 16' H heavy duty adjustable pallet racking



KONSTANT flow through type selective pallet rack storage system

2 AVAILABLE

FACTORY EQUIPMENT

KONSTANT 6-bay flow through type selective pallet rack storage system with 240,000 lbs overall capacity with 40,000 lbs/bay capacity, currently in (6) pallet deep x (4) pallet high per bay configuration, gravity roller feed, 25.5' L x 25' W x 17'H overall dimensions

KONSTANT 4-bay flow through type selective pallet rack storage system with 160,000 lbs overall capacity with 40,000 lbs/bay capacity, currently in (6) pallet deep x (3) pallet high per bay configuration, gravity roller feed, 25.5' L x 18.5' W x 17'H overall dimensions,

REDI-RACK/KONSTANT 18-bay flexible storage structure consisting of approx. (170) sections of 30"W x 8'L x 18'H adjustable pallet racking with 3,500 LB capacity per shelf, approx. 110' x 8' all bolted construction steel mezzanine with (3) access ladders and (2) fast product slides (may be sold separately)

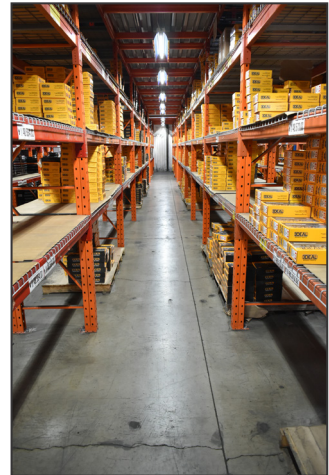
CONTACT 416.962.9600 TO CONSIGN EQUIPMENT AT AN UPCOMING AUCTION

HUGE SELECTION OF FINISHED GOODS INVENTORY—BRAND NEW IN BOX!



2500+ PART NUMBERS

17,500 SETS OF DISK BRAKE PADS AVAILABLE



IDEAL BRAKE - ABS FRICTION HUGE SELECTION OF FINISHED GOODS INVENTORY FEATURING OVER 17,500 SETS OF DISK BRAKE PADS!

PREMIUM, SEMI-METALLIC, CERAMIC and SEVERE DUTY brake pads with application to a wide range of current and late model domestic and import vehicle lines.

ALL FULLY PACKAGED and BRAND NEW IN BOX!

Also featuring a large selection of un-packaged bulk finished disk brake pads, brake shoes, W.I.P. and a huge selection of raw materials including steel brake pad blanks; brake pad hardware including sliders, clips, wear indicators and electronic wear sensors.

TO SCHEDULE AN AUCTION CONTACT 416.962.9600

LATE MODEL LOW HOUR FORKLIFTS AND MATERIAL HANDLING



4750 LBS CAPACITY

CATERPILLAR C5000-LP LPG forklift



3800 HRS

TOYOTA 9BRU18 electric reach truck



3125 HRS

TOYOTA 9BRU18 electric reach truck



2 AVAILABLE

SKYJACK SJM3219 electric scissor lift



2 AVAILABLE

JLG 10MSP zero turn electric order picker



2 AVAILABLE

TOYOTA 8HBW23 3,000 lbs capacity electric pallet trucks



13 AVAILABLE

TAUMEL T251-8126 bench type automatic orbital rivetter



GKG JET CCS-3000PS inkjet coder



Partial view of **DREMEL 3-d printers** available

ROLLING STOCK

CATERPILLAR C5000-LP LPG forklift with 4750 lbs capacity, 187" max vertical reach, 3-stage high visibility mast, cushion tires, side shift, approx. 10325 hours recorded on the meter at the time of listing, s/n AT9020338

SKYJACK SJM3219 electric scissor lift with 500 lbs capacity, 19' max vertical reach, 24 volt battery, onboard built in charger, cushion tires, s/n 24277

CONTACT 416.962.9600 TO CONSIGN EQUIPMENT AT AN UPCOMING AUCTION



ROSSI V01 vertical turret milling machine



WMW BS4AI gear head drill



COUSINS HP2100X-A automatic pallet wrapper



MAXIBLAST MB483648P/DC100 sandblasting cabinet



MK ENTERPRISE 1550 gap bed engine



HOBART portable plasma cutter



MILLER MILLERMATIC 252 digital MIG welder

ROLLING STOCK

TOYOTA 9BRU18 electric reach truck with 3,500 lbs cap., 250" max vertical reach, 3-stage mast, 110" mast height, 36 volt battery, approx. 3125 key on HRS at the time of listing, s/n 37710

TOYOTA 9BRU18 electric reach truck with 3,500 lbs capacity, 250" max vertical reach, 3-stage mast, 110" mast height, 36 volt battery, approx. 3800 key on hours recorded on meter at the time of listing, s/n 38151

BATTERYMATE 80 750H3-18C 18 cell, 36 volt automatic battery charger, 480-575v/3ph/60hz, s/n 222CS10706

BT STAXIO 4,400 LBS capacity electric walkie type fork truck with 130" max vertical lift, 24 volt battery, s/n 6079249
(2) **TOYOTA 8HBW23** 3,000 lbs capacity electric pallet trucks with 24 volt battery, s/n 24152, 26652

(2) **JLG 10MSP** zero turn electric order pickers with 350 LB capacity, 10' max. platform height, 16' max. work height, s/n 130010879; 130010834

QC DEPARTMENT

KEYENCE (2017) IM7030 digital image dimension measuring system with **KEYENCE IM 7501** control and data acquisition system, 10" TFT color display, optional light probe, s/n 4C020149 **SOLD!**

LINK ENGINEERING 2554EA test bench dynamometer with **LINK** dynamometer control system; **RELIANCE 75-HP** variable speed drive; s/n 221377 **SOLD!**

LINK ENGINEERING-FAST MACHINE MODEL M1021-E dynamic digital brake pad wear tester with **WINDOWS** PC based control and data acquisition system, s/n 961048

STEPHAN UM5 UNIVERSAL bench type vertical cutter/mixer with 5 liter capacity, s/n K717756-02

GOGAN MODEL #11 heavy duty floor type hydraulic **BRINELL** hardness tester with 5,000 kg max load capacity, s/n 2300-6

FISHER SCIENTIFIC 725F ISOTEMP oven, s/n 104N0082

PRODUCTION SUPPORT EQUIP

TAMPOPRINT HERMETIC 611 UNIVERSAL ink pad printer, s/n N/A

PAD-PRINTER PP-100 ink pad printer
(3) **SATURN C3.5E TYPE ALPHA 16"** x 20" combination L bar sealers with 17.5" x 8" aperture heat tunnel, s/n A910C331999DG; A910C3E2000DG; A0208C3E1504G

(13) **TAUML T251-8126** bench type automatic orbital rivetter with 14" x 7" T-slot table, 4.25" throat, s/n CAN-474; CAF-476916; N/A; CAN-475; CAN-463; CAN-473; CAN-496; CAN-471; CAN-266; CAN-362; CAN-477; CAN-987; CAN-359

BRACKER RN102 bench-type orbital riveter, s/n 13538

(3) **KGK JET CCS-3000PS** inkjet coder with touchscreen control, print head, s/n C3AD3S6A5A2J4D; C3AD3S6A5A2J4F; N/A

COUSINS HP2100X-A automatic pallet wrapper with 48" x 48" rotary table, 115V/1PH/60HZ, s/n 170311-2XAH-8973



Partial view of dies available



Partial view of dies available



Partial view of dies available

THIS IS A PARTIAL LISTING ONLY! FOR FURTHER INFORMATION, PLEASE VISIT WWW.CORPASSETS.COM

AUCTION DETAILS

LIVE WEBCAST ONLY

INSPECTION

Tuesday, March 18 from 9 AM to 4 PM or by appointment. Please email info@corpassets.com to arrange.

REMOVAL

All assets must be removed no later than Wednesday, April 16 BY APPOINTMENT ONLY. Please email info@corpassets.com to arrange.

TERMS

Corporate Assets Inc. assumes no liability for errors or omissions in this brochure. Corporate Assets Inc. expressly reserves the right to determine the manner of conducting the auction as it may deem appropriate. All subject to prior sale.

PAYMENT

A Buyer's Premium will apply at this sale. International & online bidders may need a refundable deposit to bid. **SALE WILL BE CONDUCTED IN USD.**

Please refer to our website at www.corpassets.com or call 416.962.9600 for further information. Pour les services en français, composez le 1.855.583.5551

We Accept



Please visit our website as specific terms and conditions may apply.

BID ONLINE AT: **BidSpotter**

AFFILIATIONS



©2024 CORPORATE ASSETS INC. ALL RIGHTS RESERVED.

SURPLUS EQUIPMENT?
TURN IDLE ASSETS INTO **CASH!**

WE BUY & SELL YOUR SURPLUS MACHINERY

ONE MACHINE OR ENTIRE PLANTS, WE HAVE OVER 60 YEARS EXPERIENCE TO SELL YOUR EQUIPMENT AT FAIR MARKET VALUE.

CONTACT US TODAY TO LEARN MORE! 416.962.9600

SUBSCRIBE TO OUR NEWSLETTER AND GET THE LATEST AUCTION UPDATES

CORPORATE ASSETS INC

corpassets.com/newsletter-signup